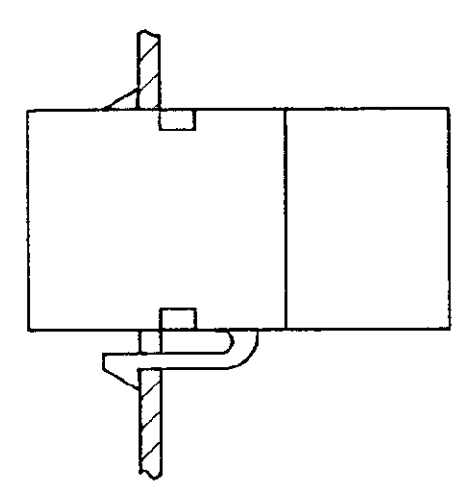
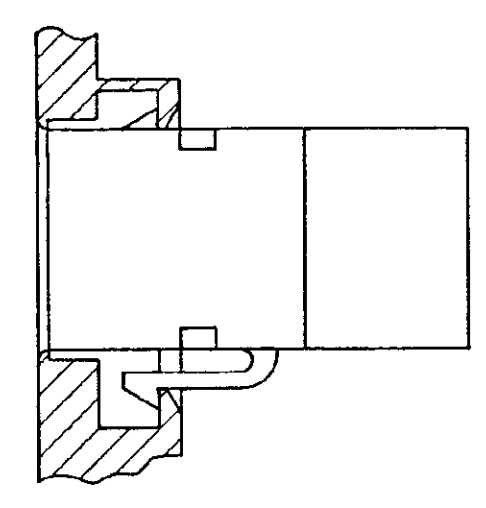
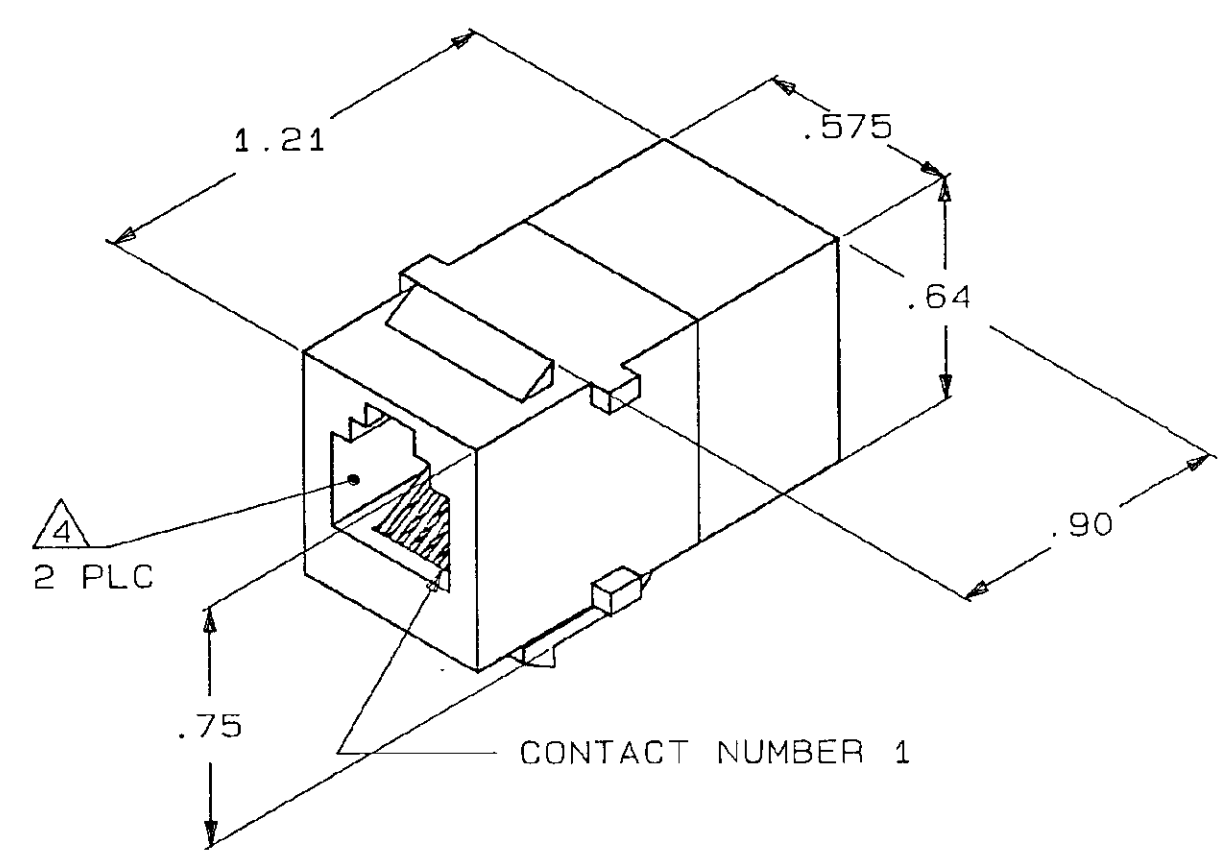


DRAWING MADE IN THIRD ANGLE PROJECTION
 THIS DRAWING IS UNPUBLISHED. RELEASED FOR PUBLICATION .19
 © COPYRIGHT 19 BY AMP INCORPORATED. ALL INTERNATIONAL RIGHTS RESERVED.

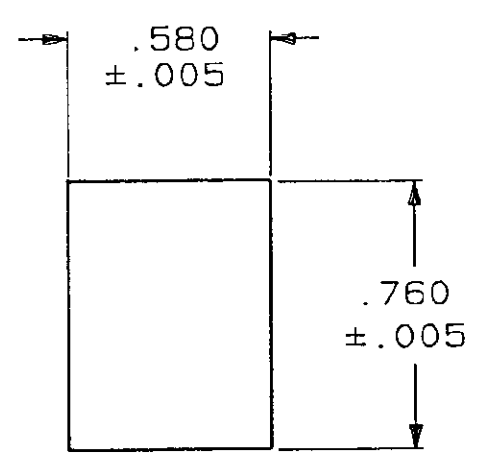
LOC	DIST	P	F	ZONE	LTR	DESCRIPTION	DATE	APPD
AA	28					REV; ECN AA-5169	7-20-88	RN TC

- ALL DIMENSIONS SHOWN ARE MAXIMUM UNLESS OTHERWISE SPECIFIED.
- MATERIAL:
 HOUSING - POLYPHENYLENE OXIDE, BLACK.
 TERMINAL - .018 DIA PHOSPHOR BRONZE PLATED WITH .000050 MINIMUM THICK GOLD OVER .000050 MINIMUM THICK NICKEL.
- MOUNTING PANEL THICKNESS .062 NOMINAL.
- CAVITIES SHALL CONFORM TO FCC RULES AND REGULATIONS, PART 68, SUBPART F.

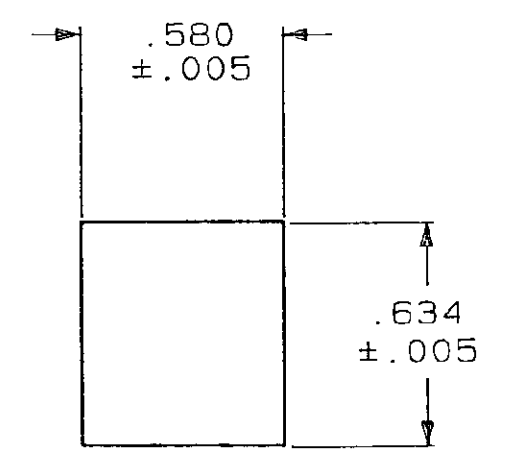


DOUBLE WALL PLATE
NOT TO SCALE

SINGLE WALL PLATE



RECOMMENDED PANEL CUTOUT
FOR SINGLE WALL PLATE
AND BACK PANEL FOR
DOUBLE WALL PLATE



RECOMMENDED FRONT PANEL
CUTOUT FOR DOUBLE
WALL PLATE

DO NOT SCALE PRINT. UNLESS SPECIFIED. DIMENSIONS IN INCHES. TOLERANCES ON:		DR C.YATES 3-17-87		555050-1	
2 PLC DEC ± -		CHK B.FOX 3-27-87		PART NO	
3 PLC DEC ± -		APPD G.FOSTER 4-1-87		AMP INCORPORATED Harrisburg, Pa. 17105	
ANGLES ± -		APPD G.FOSTER 4-1-87		NAME	
MATERIAL		PRODUCT SPEC		COUPLER ASSEMBLY, 6 POSITION, IN-LINE	
FINISH		APPLICATION SPEC		SIZE C	FSCM NO 00779
		WEIGHT -		SCALE 2:1	DRAWING NO 555050
				SHEET 1 OF 1	

CUSTOMER DRAWING